

# *felina* STEAK

PRIVATE DINING & CORPORATE EVENTS

[BOOK NOW](#)

101 S ORANGE AVE, SOUTH ORANGE, NJ 07079

973.996.8969

*by landmark*  
colorful luxury

# WELCOME TO FELINA STEAK



*felina*STEAK  
SOUTH ORANGE



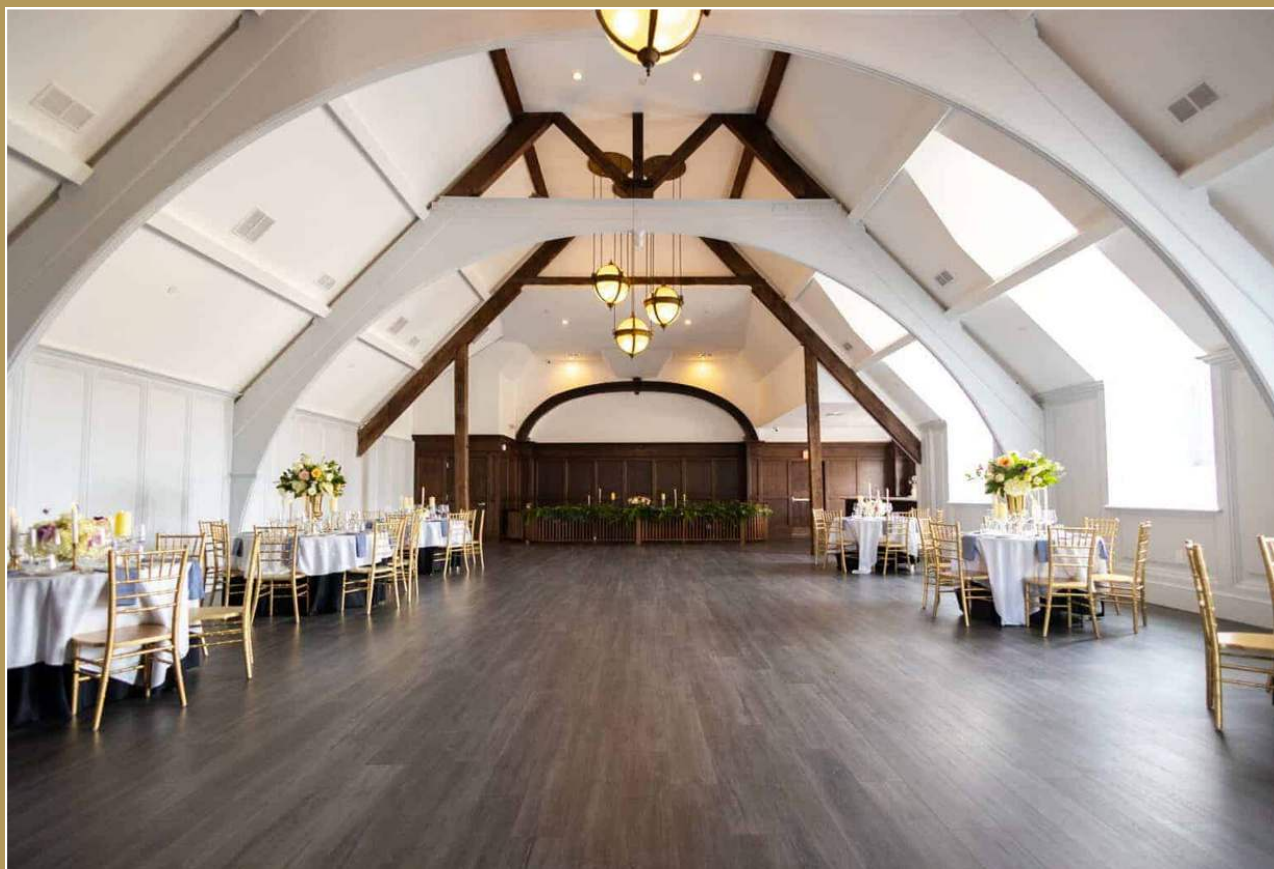
Felina Steak South Orange is a historic landmark building and houses the newest location of the Felina family of restaurants. With bold Italian cuisine, innovative cocktails, exclusive private dining and event spaces, Felina Steak South Orange sits at the intersection of timeless luxury and modern sophistication.

Originally opened in 1894, this historical treasure is in the heart of the diverse and vibrant downtown South Orange. The architectural design celebrates and highlights different aspects of the original building. The new design focuses on incorporating a hospitable warmth while introducing contemporary comfort, mixing old and new expertly.

*felina*STEAK

# EVENT SPACES

---



## ROOM

THE LOUNGE

LA TERRAZZA

PRIVATE DINING ROOM

RESTAURANT BUY-OUT

THE LOFT

THE BALLROOM

## CAPACITY

UP TO 35

UP TO 50

UP TO 24

UP TO 75

UP TO 50

UP TO 120



# FELINA STEAK | LARGE PARTY DINING

---

In the heart of South Orange, Felina Steak comes alive with energy. Large party guests will indulge in elevated Italian comfort food, expertly prepared with modern techniques and premium ingredients. From handmade pastas and decadent seafood dishes to dry-aged steaks and pristine chops, every dish is crafted to reflect the richness of Italy with a distinctly New Jersey edge.

## NUMBER OF GUESTS

---

Full Restaurant Buy-Out

## SET-UP OPTIONS

---

Large parties are invited to enjoy our dining room which can be reconfigured to host up to 20 guests at a table. Full buyouts available.

## TIMING

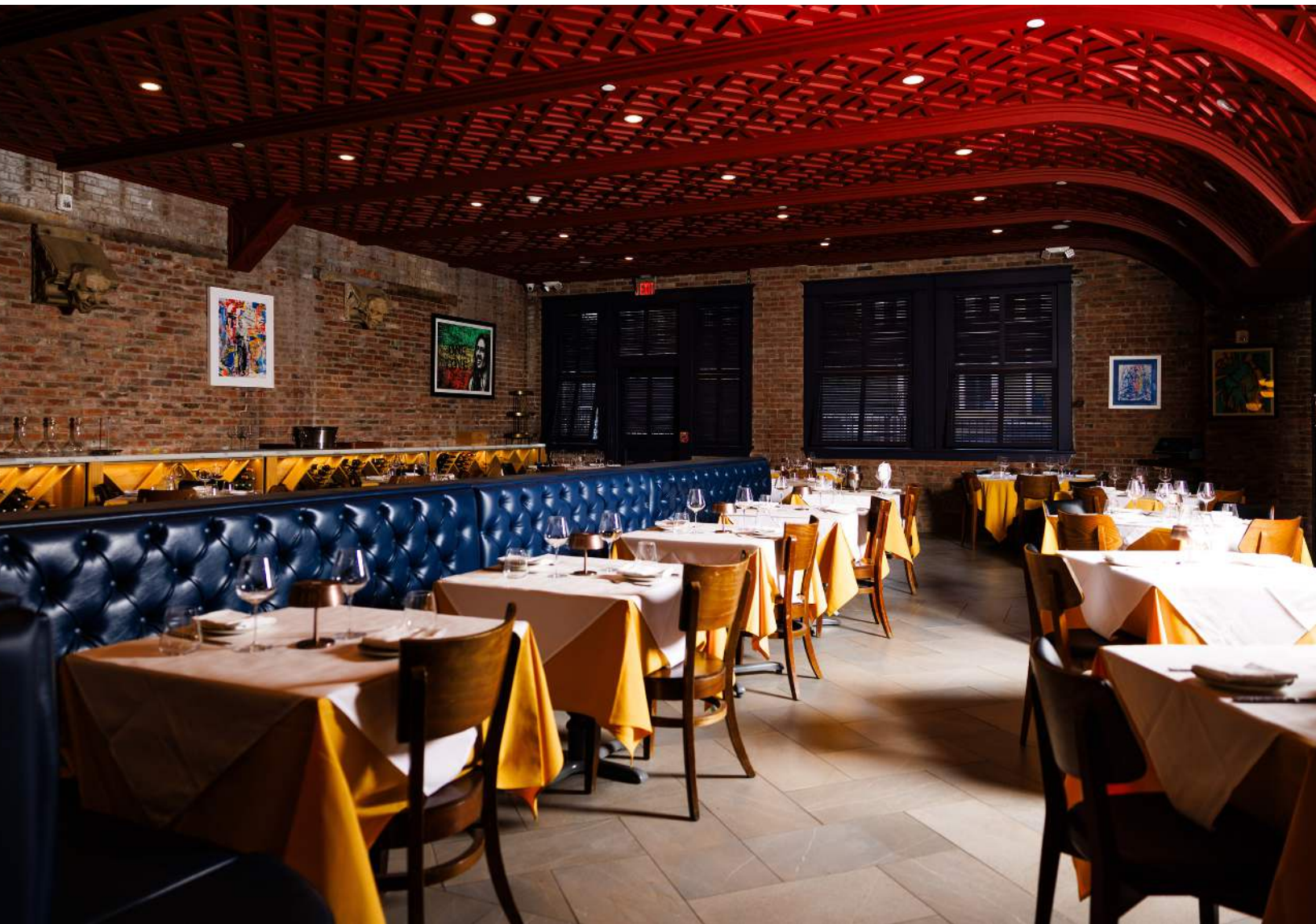
---

Availability is based on standard opening and closing times at Felina Steak. Full buyouts are available, please inquire for timing.

## PRICING

---

There is only a food and beverage minimum for a restaurant buy-out. All reservations in the Main Dining Room of 20 guests or less, do not have a food and beverage minimum requirement. However, we require all parties of 13+ guests to dine from one of our private dining menus which can be found in the pages that follow.





# PRIVATE DINING ROOM

---

The private dining room at Felina Steak South Orange offers the perfect setting for exclusive and intimate dining experiences. You & your guests will enjoy special tasting menus and beverage selections, curated exactly to your needs. Whether it's for friends, family, or a business client, nothing makes quite an impression as having a private dining experience at Felina Steak South Orange.

## NUMBER OF GUESTS

---

Up to 24 guests

## SET-UP OPTIONS

---

The private dining room features a beautiful, long wood table that can seat up to 24 with room to mingle.

## TIMING

---

Availability is based on standard opening and closing times at Felina Steak.

## PRICING

---

There is a food and beverage minimum requirement. Please inquire for more information on menu, availability, and minimums.





# LA TERRAZZA

---

La Terrazza provides the perfect setting for connection, collaboration and conversation. With flexible indoor and outdoor spaces, you can host the perfect gathering rain or shine. Outdoor lounge seating features fire pits and street views. The indoor space features stunning and unique architectural details.

## NUMBER OF GUESTS

---

Groups are welcome of 25-50 guests for a cocktail-style event.

## SET-UP OPTIONS

---

La Terrazza offers a mix of tables, bar and lounge seating that can be adjusted to accommodate your event needs.

## PRICING

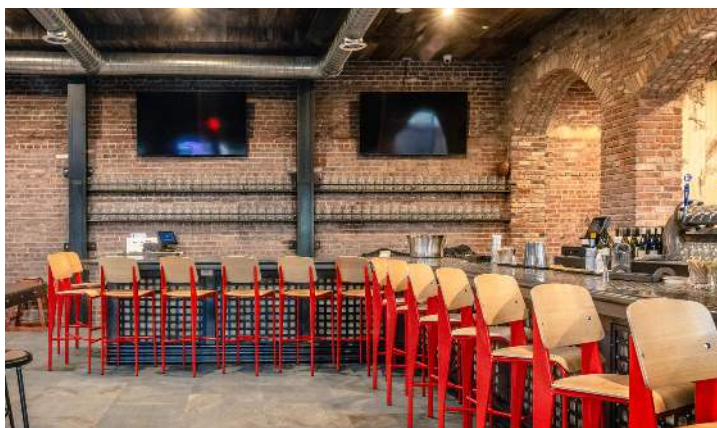
---

Social event menus are available. For a personalized proposal, feel free to inquire— we're happy to customize a menu to fit your specific needs.

## TIMING

---

Event timing is based on standard opening and closing times for Felina Steak.





# THE LOFT

---

## NUMBER OF GUESTS

---

Up to 50

## PRICING

---

For thoughtfully curated packages, please view the menus in the pages that follow. For a personalized proposal, feel free to inquire— we're happy to customize a menu to fit your specific needs.

## SET-UP OPTIONS

---

The Loft allows for a variety of set-up options, tailored to fit your event.

## TIMING

---

Event timing is flexible to accommodate your parties needs.



# VILLAGE HALL BALLROOM

---

Upstairs our unique and reimagined event spaces are designed for versatility with bright light and flexible set-up options. Village Hall Ballroom transforms into an unforgettable setting for dinners, dancing, and corporate events, while our pre-function area provides extra space for cocktails, lounge seating, check-in and more.

## NUMBER OF GUESTS

---

Up to 120

## PRICING

---

For thoughtfully curated packages, please view the menus in the pages that follow. For a personalized proposal, feel free to inquire— we're happy to customize a menu to fit your specific needs.

## SET-UP OPTIONS

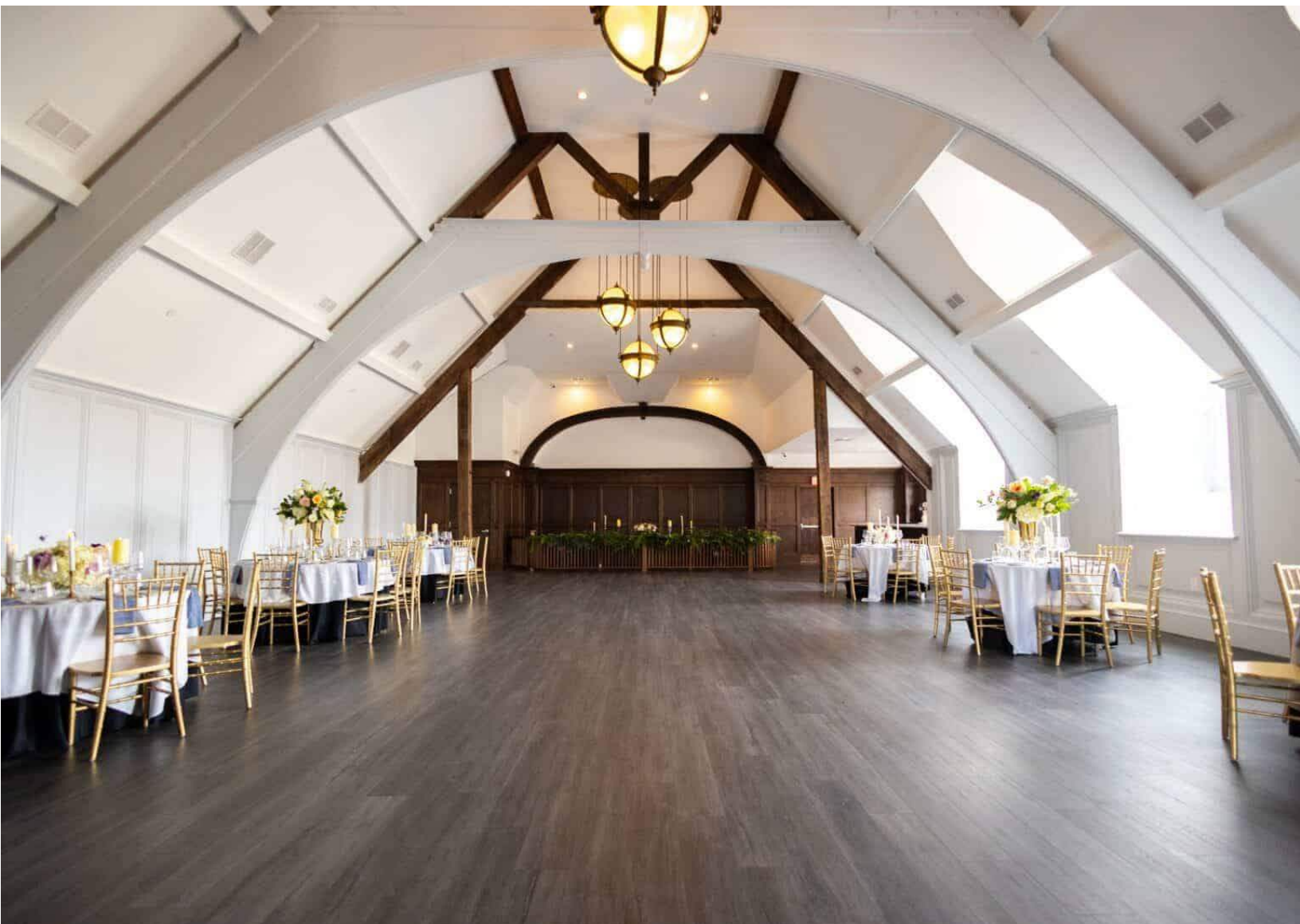
---

The Village Hall Ballroom offers cocktail style, seated reception, theater, and classroom style set-ups.

## TIMING

---

Event timing is flexible to accommodate your parties needs.

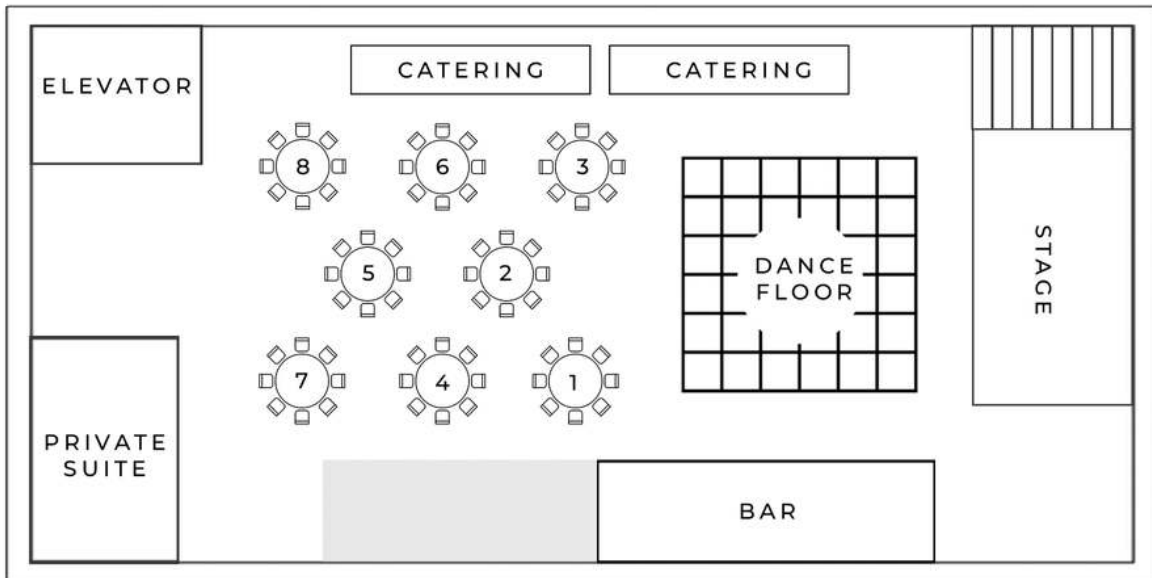




# BALLROOM & THE LOFT SET-UP

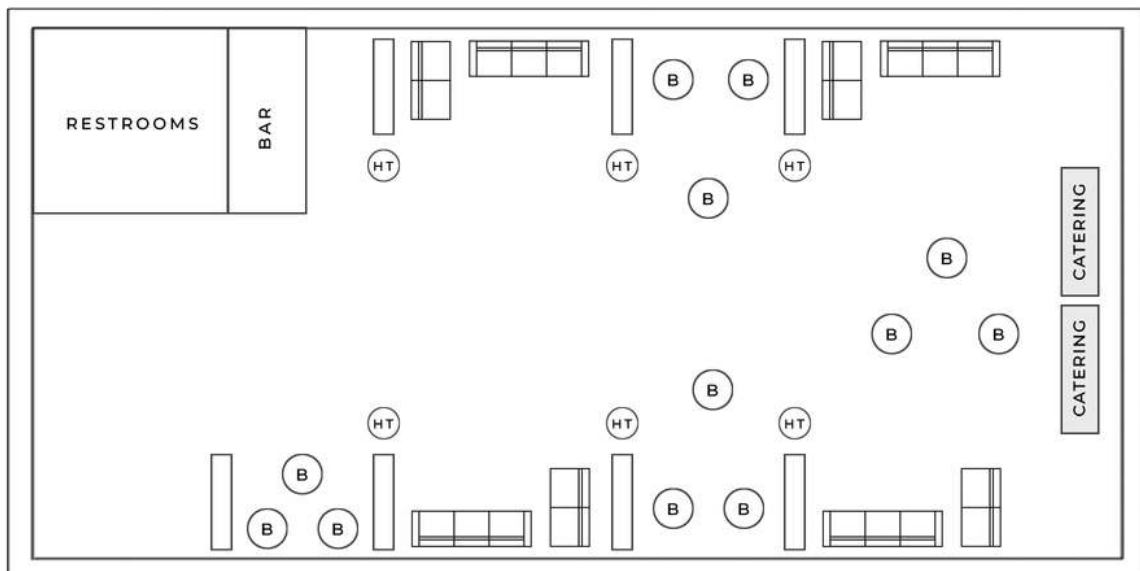
## BALLROOM SEATED RECEPTION

ACCOMMODATES UP TO 120



## THE LOFT & LOUNGE SET-UP

ACCOMMODATES UP TO 100





*felina*STEAK



# RESTAURANT MENUS

## LUNCH MENU

**\$60 Per Person | 3 Hours**

**Available Tuesday-Saturday 12pm-3pm**

*+NJ Sales Tax | 20% Gratuity | 4% Admin Fee*

### APPETIZER

*FAMILY STYLE*

#### **Caesar Salad**

*Sour Dough, Parmesan, Lemon Zest*

#### **Mozzarella Caprese**

*Pesto, Roasted Cherry Tomato, Balsamic*

### ENTREE

*FAMILY STYLE*

#### **Chicken Scarpariello**

*Local Chicken Breast, Potato Puree, Fennel Sausage, Cherry Peppers, Sage*

#### **Eggplant Parmigiana**

*Pomodoro, Basil*

#### **Spaghetti**

*Felina Meatballs, Pomodoro, Basil*

### DESSERT

*INDIVIDUALLY PLATED*

#### **Cheesecake**

### INCLUDED BEVERAGES

**Soft Drinks | Herbal Tea | Freshly Brewed Coffee**

*Menu Subject to Change Based on Seasonality & Availability*

*felina* STEAK

# BRUNCH MENU

**\$65 Per Person | 3 Hours**  
**Available on Sunday 12pm-3pm**

*+NJ Sales Tax | 20% Gratuity | 4% Admin Fee*

## APPETIZER

*FAMILY STYLE*

### **Tempura Calamari**

*Cherry Peppers, Lemon Aioli*

### **Felina Chop Salad**

*Little Gems, Parmigiano, Bacon, Corn, Blue Cheese, Roasted Peppers*

### **Prosciutto E Mozzarella**

*Tomato, Mozzarella, Parmigiano*

## ENTREE

*FAMILY STYLE*

### **Avocado Toast**

*Poached Egg, Calabrian Chili, Whole Grain Toast*

### **French Toast**

*Whipped Burrata, Berry Coulis*

### **Cacio e Pepe**

*Rigatoni, Pecorino Romano, Black Pepper*

### **Chicken Milanese**

*Arugula, Cherry Tomato, Citrus Aioli, Pecorino*

## ADDITIONAL COSTS

*\$10 Flat Iron Steak | \$12 Ribeye Steak | \$16 NY Strip Steak M/P Tomahawk Steak*

## SIDES

*FAMILY STYLE*

### **Parmesan French Fries**

**Garlic Chili Broccoli Rabe**

## DESSERT

*INDIVIDUALLY PLATED*

**Chef's Selection**

## INCLUDED BEVERAGES

**Soft Drinks | Herbal Tea | Freshly Brewed Coffee**

*Menu Subject to Change Based on Seasonality & Availability*

*felina* STEAK



# DINNER MENU

*Served Family Style*

## **TIER 1**

**\$70 Per Person | 3 Hours**

*+NJ Sales Tax | 20% Gratuity | 4% Admin Fee*

## **APPETIZER**

*FAMILY STYLE*

### **Baby Gem Caesar Salad**

*Little Gems, Parmigiano, Lemon, Garlic Crouton*

### **Felina Meatballs**

*Pomodoro, Local Ricotta, Basil*

### **Tempura Fried Calamari**

*Pickled Cherry Peppers, Lemon Aioli*

## **ENTREE**

*FAMILY STYLE*

### **Chicken Scarpariello**

*Potato Purée, Fennel Sausage, Cherry Peppers, Sage*

### **Crispy Skin Salmon**

*Parsnip Puree, Winter Farro Salad, Toasted Maple Walnuts*

### **Rigatoni Cacio e Pepe**

*Pecorino Romano, Black Pepper*

## **ADDITIONAL COSTS**

*\$12 Flat Iron Steak | \$15 Ribeye Steak | \$20 NY Strip Steak  
M/P Tomahawk Steak*

## **DESSERT**

*INDIVIDUALLY PLATED*

**Tiramisu**

## **INCLUDED BEVERAGES**

**Soft Drinks | Herbal Tea | Freshly Brewed Coffee**

*Menu Subject to Change Based on Seasonality & Availability*

*felina* STEAK

# DINNER MENU

*Served Family Style*

## **TIER 2**

**\$85 Per Person | 3 Hours**

*+NJ Sales Tax | 20% Gratuity | 4% Admin Fee*

## **ANTIPASTI**

### **Focaccia**

*Pickled Eggplant, Marinated Olives*

## **APPETIZER**

### **FAMILY STYLE**

### **Baby Gem Caesar Salad**

*Little Gems, Parmigiano, Lemon, Garlic Crouton*

### **Stracciatella**

*Beets, Prosciutto de parma, Focaccia Crouton, Watercress, Confit Cherry Tomato, Tarragon*

## **ENTREE**

### **FAMILY STYLE**

### **Chicken Scarpariello**

*Potato Purée, Fennel Sausage, Cherry Peppers, Sage*

### **Crispy Skin Salmon**

*Parsnip Puree, Winter Farro Salad, Toasted Maple Walnuts*

### **Rigatoni Cacio e Pepe**

*Pecorino Romano, Black Pepper*

## **ADDITIONAL COSTS**

*\$7 Flat Iron Steak | \$9 Ribeye Steak | \$12 NY Strip Steak | M/P Tomahawk Steak*

## **SIDES**

### **FAMILY STYLE**

### **French Fries**

*Truffle, Pecorino*

### **Shishito Peppers**

*Mayo Vinaigrette, Everything Spice*

## **DESSERT**

### **INDIVIDUALLY PLATED**

### **Cheesecake**

## **INCLUDED BEVERAGES**

**Soft Drinks | Herbal Tea | Freshly Brewed Coffee**

*Menu Subject to Change Based on Seasonality & Availability*

*felina* STEAK



# SOCIAL EVENT MENU

## STATIONARY DISPLAYS

*20 person minimum*

*+NJ Sales Tax | 20% Gratuity | 4% Admin Fee*

### APP DISPLAY

**\$35 PER PERSON**

*Please Select Three:*

Saffron Arancini  
Tempura Fried Calamari  
Felina Meatballs  
Filet Mignon Bites  
Eggplant Parm  
Caesar Salad  
Farm Salad

### CHARCUTERIE & CHEESE DISPLAY

**\$10 PER PERSON**

Charcuterie  
Fruit & Cheese  
Hummus Dip  
Marinated Artichokes  
Roasted Peppers  
Olives  
Baguette & Crostini

### PASTA DISPLAY

**\$10 PER PERSON**

*Please Select Two:*

Garganelli alla Vodka  
Rigatoni al Ragu  
Mafalde Cacio e Pepe

### PIZZA DISPLAY

**\$10 PER PERSON**

*Please Select Two:*

Classic  
Margherita  
Vodka  
Soppressata  
Pepperoni

### RAW BAR DISPLAY

**\$20 PER PERSON**

East Coast Oysters  
West Coast Oysters  
Littleneck Clams  
Shrimp Cocktail

*Menu Subject to Change Based on Seasonality & Availability*

*felina* STEAK

# CAKE MENU

\$5 PER PERSON

+NJ Sales Tax | 20% Gratuity | 4% Admin Fee

*\*Important! Cake orders must be submitted 10 days prior to the event and cannot be changed within the 10-day window of your event. Minimum guest count to order is 12 guests. Cake is an add-on to the event package. This cannot be swapped for plated dessert.*

Please select 1 from each category below.  
Provide inscription & color preferences!

## CAKE FLAVOR

Vanilla  
Chocolate  
Dark Chocolate

Red Velvet  
Vanilla & Chocolate  
Carrot (+\$2pp)

## CAKE FILLING

Chocolate Pudding  
Chocolate Fudge  
Vanilla Custard + Strawberry Filling  
French Cream + Raspberry Filling  
Dulce De Leche Mousse  
Hazelnut Mousse  
Coconut Mousse  
Chocolate Mousse  
Lemon Mousse

## CAKE BUTTERCREAM ICING

*Fondant is additional cost*

Buttercream  
Whipped Cream  
Fudge  
Cream Cheese  
Ganache

*Menu Subject to Change Based on Seasonality & Availability*

*felina* STEAK



# BAR ENHANCEMENTS

## OPTION 1 | BRUNCH BAR

Mimosa, Bellini, Prosecco, Juice | \$25 per person

Mimosa, Bellini, Sangria, Prosecco, Juice | \$35 per person

## OPTION 2 | BEER & WINE BAR

House Brands

3 hours | \$30 per person

## OPTION 3 | RUN A TAB

All alcoholic beverages are charged on consumption to the final bill.

## OPTION 4 | PRE-SELECT WINE

You'll pre-select wines from our curated wine list, and only those selections will be available to your guests.

Wine is charged per bottle.

A separate tab will be run for beer and cocktails.

*All guests 21 & over will be charged for the bar package selected.*

*If alcohol is limited or not permitted to be charged to the final bill, please confirm prior to the event as it must be noted on the contract.*



# LARGE PARTY DINING

---

## MORE INFORMATION

- In addition to the private dining menu selections, you can add additional family style appetizers from our current à la carte menu. These items will be charged by order, not by person. Appetizers typically feed 1-2 people.
- You have access to the room 1 hour prior to the event based upon availability.
- Flowers and balloons are welcome. No table confetti or décor stuck to the walls.
- No outside catering, live entertainment, dance floor, DJ, or audio visual equipment are permitted.
- Children's Menu (Ages 5-12) \$35 per child Includes child friendly entrée + ice cream.

## BOOKING & DEPOSIT

To secure your event space, please fill out the credit card authorization form. We require an event deposit at the time of booking. This deposit is non-refundable and cannot be moved to a new date. Once the credit card form & deposit have been received, your event space is confirmed.

## TAX

Prevailing state sales tax rate will be added to the final bill.

## GRATUITY & ADMINISTRATIVE FEE

A 20% Gratuity & 4% Administrative fee will be added to the final bill.

## GUEST COUNT

An estimated guest count will be noted on the credit card authorization form at the time of booking. The final guest count guarantee is due 7-days prior to the event.

## MENU SELECTIONS

We ask for your final menu selections at least 2-weeks prior to the events as this must be submitted to the chef for ordering and preparation.

## BEVERAGE SELECTIONS

The following are included in all private dining menu packages: bottled sparkling + still water, soft drinks, freshly brewed coffee, and herbal tea. Alcoholic beverage enhancements are available to be added to your event

## CANCELLATION POLICY

If event is canceled within 10-business days of the event date, you will be charged for the full amount noted on the booking agreement. Deposit is non-refundable.

## ADDITIONAL INFORMATION

Outside cake fee | \$4 per person

FOR ALL BOOKINGS, PLEASE CONTACT:

**Michelle Parvez | Private Dining Manager**

By Landmark Main Office | Plainfield, NJ | 201.984.1118

privatedining@bylandmark.com





# AUDIO VISUAL CAPABILITIES

\*FOR THE BALLROOM SPACE ONLY\*

Our event managers work with you and external partners to ensure your audio visual needs are exceeded. Each venue offers a set of in-house equipment that can be supplemented through our preferred partners.

## AUDIO VISUAL EQUIPMENT

Work with our vendors and partners to ensure all your AV needs are met.

### AVAILABLE OPTIONS

- LCD Projector
- Large Screen TV
- Wireless Internet
- Wireless Mic
- TV Production Service Provider
- Teleconferencing
- Video Camera
- Videoconferencing

## EVENT AND EQUIPMENT SUPPLIES

Our event managers will set up your event for a seamless and successful experience:

- Direction Signs
- Easels
- Flip Chart & Markers
- Pens / Pencils / Notepad
- Tables

### ADDITIONAL

- Wall Charts
- Blackboards
- Podium Lectern
- Portable Stage



# TEAM BUILDING

At By Landmark, we believe that well-designed Team Building is a fun and effective way to improve communication and unity. Allow our Sales Team, along with our professional partners, to create an exceptional team building program that meets your specific needs and budget!

## INTERACTIVE TEAM CHALLENGES

Scavenger Hunts	Treasure Box Challenge
Charity Bike Build	Charity Library
Casino Night	Comedy Improv Team Building
Fast Car Racing	High Tech Team Building
Food Truck Frenzy	Manage a Rock Band
Lego Challenge	Photo Fun
Golfing for Good	Bridge to Success
Game Shows	

## CULINARY CHALLENGES

Food Truck Challenge  
Chef's Challenge  
Just Desserts  
Cook-off  
Holiday Ginger Bread House Decorating

## SPECIALTY BEVERAGE CLASSES

Mixology 101  
Local Craft Beer Tasting  
Wine Tasting  
Bourbon, Scotch or Whiskey Tastings  
Local Craft Beer Tasting





# MEET THE CHEF

---



## RAY RUSSO Chef

Chef Ray Russo's culinary journey began at an early age, standing alongside his beloved grandmother in the kitchen. Those cherished moments, rolling pasta dough and absorbing the essence of Italian cuisine, would forever shape his passion for cooking.

After graduating from pastry school, his remarkable talent led him to become the Executive Gelato Chef at Ferrara in just a year. It was here that he honed his skills in the art of gelato, and his dedication to mastering the craft led him to Italy for further training. Ray applied for a pastry chef position at Jean Georges, but fate had a different plan. With the pastry chef role already filled, Chef Amy Sur-Trevino proposed a bold change - to venture into the savory side of the kitchen. Initially hesitant, Ray took the leap, seizing the opportunity to grow and evolve in the culinary world. Ray's dedication and hard work soon paid dividends and within just three months of joining the team, he was promoted to Sous Chef and seven months later, Ray was entrusted with the prestigious role of Executive Chef at the Paris Café by Jean Georges.

Throughout his journey, Chef Ray Russo's love for Italian cuisine, instilled by his grandmother, has remained at the core of his culinary identity.

He brings that same warmth and tradition to every dish he creates, ensuring that each bite is not just a meal but a heartfelt connection to his culinary heritage. In his illustrious career, Chef Ray Russo continues to push boundaries, explore new flavors, and pay homage to the roots that inspired his remarkable journey. His culinary artistry and dedication to his craft have made him a respected figure in the world of fine dining, all while honoring the spirit of his grandmother's kitchen.



by landmark  
colorful luxury





# EVENT VENUES

A venue for every vision, By Landmark owns and operates distinctive venues, impeccable restaurants, and boutique hotels throughout New Jersey and Pennsylvania.

VENUE	LOCATION	CAPACITY
1. FELINA RIDGEWOOD	RIDGEWOOD, NJ	UP TO 250
2. THE VIEW	JERSEY CITY, NJ	UP TO 250
3. LIBERTY HOUSE	JERSEY CITY, NJ	UP TO 600
4. HUDSON HOUSE	JERSEY CITY, NJ	UP TO 550
5. FELINA STEAK	SOUTH ORANGE, NJ	UP TO 120
6. BANQ ON PARQ	PLAINFIELD, NJ	UP TO 550
7. THE ALBION SUMMIT	SUMMIT, NEW JERSEY	UP TO 200
8. STONE HOUSE	WARREN, NJ	UP TO 375
9. RYLAND INN	WHITEHOUSE STATION, NJ	UP TO 400
10. FARM HOUSE	HAMPTON, NJ	UP TO 350
11. CASCADE LODGE	KINTERSVILLE, PA	UP TO 200
12. HOTEL DU VILLAGE	NEW HOPE, PA	UP TO 300
13. LOGAN INN	NEW HOPE, PA	UP TO 150
14. ELKINS ESTATE	ELKINS PARK, PA	UP TO 300





# WE LOOK FORWARD TO WELCOMING YOU AT FELINA STEAK

For questions and bookings, please contact us at  
[privatedining@bylandmark.com](mailto:privatedining@bylandmark.com).

*felina* STEAK

101 S ORANGE AVE, SOUTH ORANGE, NJ 07079  
973.996.8969